

PORT OF SEATTLE
MEMORANDUM

COMMISSION AGENDA
ACTION ITEM

Item No.	<u>6d</u>
Date of Meeting	<u>December 9, 2014</u>

DATE: December 1, 2014
TO: Ted Fick, Chief Executive Officer
FROM: Stephanie Jones Stebbins, Director, Seaport Environmental & Planning
Elizabeth Leavitt, Director, Aviation Planning & Environmental Services
SUBJECT: 2015-2019 Environmental Remediation Liability Program

Amount of This Request:	\$36,804,000	Source of Funds:	Airport – Airport Development Fund;
Est. Port 5 year Cost:	\$64,088,000		Real Estate and Seaport – Tax Levy
Est. State and Local Taxes:	\$ 956,000		

ACTION REQUESTED

Request Commission authorization for the Chief Executive Officer to implement (1) a five-year spending plan of \$64,088,000 for the Environmental Remediation Liability (ERL) Program for the Seaport, Real Estate, and Aviation Divisions for 2015-2019; and (2) environmental remediation liabilities funds for 2015 in the amount of \$36,804,000, of which (a) \$16,804,000 is forecasted to be spent in 2015 and (b) an amount estimated not to exceed \$20,000,000 of the remaining funds approved in the five-year plan will be obligated during 2015 to be spent in future years.

SYNOPSIS

As a major industrial and commercial land owner, the Port has significant environmental cleanup liabilities due to historic contamination of its properties.

- Since 1993, the Port has booked liabilities to recognize these obligations. While Port environmental cleanup projects typically span several years, more complex projects have been active for over 15 years.
- From 2009 to 2013, the amount spent under the annual ERL authorizations was \$59,008,000.

The \$16,804,000 requested spending authorization for 2015 will allow continuation of ongoing environmental investigation, testing, analysis, design, cleanup, and monitoring for active sites and will initiate similar activities for new sites, as noted in this memorandum. The authorization to obligate \$20,000,000 in 2015 will allow the Port to enter into contracts for continuing this work in future years, as much of this work spans multiple years. Prior to actual spending of these obligated funds, Commission budget approval will be needed, likely through a future annual ERL authorization.

COMMISSION AGENDA

Ted Fick, Chief Executive Officer

December 1, 2014

Page 2 of 15

The approval of the five-year plan gives greater visibility to our projected upcoming environmental remediation liability spending. In addition, the authorization to enter multi-year contracts and service directives allows the Port to more efficiently contract for work of multi-year duration. Funds projected for years beyond 2015 will not be spent until authorized by a future Commission action (i.e., next year's ERL spending authorization).

BACKGROUND

The Port has identified a number of contaminated sites on Seaport, Real Estate and Aviation properties that must be investigated and remediated in compliance with federal and state environmental laws and regulations. In some cases, the Port has been designated by the federal government as a "Potentially Responsible Party" (PRP), and/or by the state government as a "Potentially Liable Party" (PLP) for the investigation and cleanup of properties owned by the Port or where the Port may have contributed to site contamination.

Although the Port may not bear ultimate liability for the contamination, under federal and state law, the Port is presumptively liable as the property owner, and it is often practically and financially beneficial for the Port to take initial responsibility to manage and pay for the cleanup.

In many cases, the Port has successfully recovered and/or will seek recovery from other responsible parties for Port-incurred investigation and cleanup costs. The Port also has been successful in receiving Model Toxics Control Act (MTCA) grant funds to pay part of the cleanup costs. The Port's goals are to cost-effectively complete this environmentally responsible work and to maximize work accomplished by or paid for by the parties responsible for the conditions encountered (or others, such as insurance companies, who represent them).

To mitigate such environmental expenditures, the Port also encourages, coordinates with, and oversees the investigation and cleanup of sites by other responsible parties, to assure that legal requirements are met and that Port liabilities are minimized. Regardless of whether the Port conducts the investigation and remediation directly, or oversees the proper performance of that work by other responsible parties, *the Port provides a valuable public benefit by acting as a catalyst in expediting appropriate environmental management of these sites.*

Accounting rules require that the Port "book" or establish a liability on its balance sheet for environmental remediation when the Port's obligation meets specified definitions of certainty and the liability amount can be reasonably estimated. When an environmental remediation liability is booked, an expense is also recorded in the current period for the future expenditures. The Port develops its environmental remediation liability forecasts in compliance with Government Accounting Standards Board (GASB) *Statement No. 49 "Accounting and Financial Reporting for Pollution Remediation Obligations."*

Environmental liability expenditures are authorized in one of two ways:

1. If the environmental costs are incurred in the course of, or incidental to, a construction project, the Commission authorization occurs as part of the authorization for the overall construction project. Examples of this include asbestos removal, offsite soil disposal during construction, or upland dredge material disposal.

COMMISSION AGENDA

Ted Fick, Chief Executive Officer

December 1, 2014

Page 3 of 15

2. If the environmental cost is not associated with a capital construction project or maintenance (including asbestos and lead), but is a stand-alone pollution remediation project, the expenditure is authorized through one annual action.

Since 1993, the Commission has approved annual environmental expenditures. In addition, Commission authorization is obtained prior to entering into legal commitments for investigation or cleanup actions, such as an Agreed Order, Administrative Order on Consent (AOC) or Administrative Settlement Agreement and Order on Consent (ASAOC) referred to as Orders. Under the Orders, the Port is required to pay agency oversight costs. Further, to the extent required by Resolution No. 3605, as amended by Resolution No. 3628, Central Procurement Office contract actions in support of approved environmental projects may require additional Commission authorization.

PROJECT JUSTIFICATION AND DETAILS

Consistent with past practices, the duration of the authorization continues to be an annual spending authorization. However, since 2011, the authorization requests have also provided a rolling five-year spending plan to reflect the level of resources expected to be required over the next five years. Executing contract obligations for a longer duration minimizes the need to rework all contract amendments and service directives that are aligned with the end-of-year authorization. It also provides greater visibility of the environmental liability costs.

The environmental investigation and remediation actions described below are generally required under federal and/or state law, exceptions are noted. Remedial actions continue to focus on cost-effective study, analysis, and implementation of cleanup actions; coordination with capital planning, design, and construction; and negotiation with agencies, tenants, other PRPs and insurance companies.

Project Objectives:

- Perform the remediation work at the various sites in accordance with the various agreed orders.
- Manage and perform the work, with project controls and contract systems in place.
- Identify and consider community values and concerns as part of the various public participation plans.
- Remediation investigations, designs and implementations will be carried out in a manner that considers current and potential uses for the sites.
- Maximize cost recovery

Scope of Work

Seaport Sites/Projects

Lower Duwamish Waterway Superfund – The Lower Duwamish Waterway (LDW) is a Federal and State Superfund Site. The Lower Duwamish Work Group (LDWG), consisting of the Port, the City of Seattle, King County and Boeing, has completed a Remedial Investigation and Feasibility Study (RI/FS) of the Waterway under Order with the Environmental Protection Agency (EPA) and the Department of Ecology (Ecology). The Port is the contracting agent for the RI/FS and Fisher Study for the LDWG.

COMMISSION AGENDA

Ted Fick, Chief Executive Officer

December 1, 2014

Page 4 of 15

- The final FS was issued October 2012 and EPA's Proposed Plan was issued for public review and comment in late February 2013.
- Public comment on the Proposed Plan closed in June 2013 and will be used by EPA to develop its Record of Decision for the final cleanup plan.
- EPA will issue the Record of Decision in late 2014, after seeking concurrence from Ecology. In 2014, as part of the ongoing FS design, LDWG initiated a year-long Fisher Study to determine who is using the river for fishing. In addition, LDWG has scoped a carbon amendment pilot study which will begin the end of 2014 and be completed in 2020. With funding through an Interlocal Agreement (ILA) with Ecology, the Port is conducting stormwater line cleanouts on Port-owned properties along the LDW, which is expected to be completed in 2015.

Terminal 117 Sediments, Bank and Uplands – As part of the Lower Duwamish Waterway Superfund effort, EPA identified several sediment hot spots that warranted early cleanup action as an Early Action Area (EAA), including the Port's Terminal 117 (T-117) in South Park.

- The EPA issued the 2010 Action Memorandum for T-117 that identified the EPA-selected cleanup action.
- The latest EPA Order for T-117 removal design and removal action (RD/RA) was signed by the Port and City on June 9, 2011.
- EPA approved the final design on October 15, 2012. The removal action was contracted in June 2013 and is ongoing.
- A majority of the cleanup has been completed, and a minor, remaining portion is anticipated to be completed by the first half of 2015. The next step will be to monitor the site to verify the remedial goals continue to be met.

Terminal 108 – As part of the effort to control sources of contamination to the LDW, the LDWG identified potential source sites that could require early cleanup action. One such site is located in the sediments adjacent to Terminal 108. Ecology requested, and the Port voluntarily agreed, to perform additional investigation of the groundwater. The groundwater study determined that the groundwater is not a source of contaminants to the river. However, additional contamination was discovered on the site that may generate additional sampling requirements. As part of an ILA with Ecology, the Port is planning to conduct a bank stabilization pilot study at Terminal 108 as an independent action.

Terminal 115 – The Port has been conducting a continuing program to remove small amounts of free product (petroleum) from groundwater caused by two leaking underground tanks that were removed from the southwest portion of the terminal. Investigative groundwater monitoring is also continuing. Soils are marginally contaminated at the active card-lock fueling site; cleanup is not required by regulatory agencies at this time.

Activities at this site also include coordination with Ecology on source control efforts required as part of the LDW RI/FS process. The Port has conducted an Environmental Conditions investigation for the entire property. Ecology has developed a Source Control Action Plan for T115 based partially on their review of the Environmental Conditions investigation.

COMMISSION AGENDA

Ted Fick, Chief Executive Officer

December 1, 2014

Page 5 of 15

Terminal 115 North – In late January 2009, the Port received from Ecology a Notice of Potential MTCA Liability. Ecology has focused on this site because it is located adjacent to Glacier Bay, one of the high priority sediment sites (Glacier Bay) within the Lower Duwamish Superfund site. Glacier Bay is located north of Terminal 115. On November 2, 2010, the Commission authorized entering into a MTCA Order for this site, under which the Port will further characterize the site and develop a draft cleanup action plan. Since then, the scope of work for the remedial investigation has been finalized and the field work is being performed under the Ecology-approved schedule.

Terminal 5 Ecology State Cleanup Sites – In the past, as part of the Terminal 5 Southwest Harbor redevelopment, the Port completed remediation at four sites under three Consent Decrees with Ecology. Current obligations include on-going cap inspection and maintenance of the cap in the four areas, and coordination and review of the future adjacent sediment cleanup work to be performed by Lockheed.

Terminal 5 Pacific Sound Resources (PSR) EPA Superfund Site – This site was cleaned up under an Order with EPA as part of the Terminal 5 Southwest Harbor redevelopment project. Ongoing obligations include continuing to perform required cap inspection and cap maintenance, product recovery activities and monitoring EPA activities related to the groundwater and the off shore sediments.

Harbor Island Superfund Site Soil and Groundwater Operable Unit – Terminal 18 is located within this Superfund site. Cleanup of this site was performed under a Consent Decree with EPA. Long-term groundwater monitoring is being performed by the group consultant under a PRP agreement. Long-term cap maintenance and inspections have been initiated as required under the Record of Decision.

Harbor Island Superfund Site East Waterway Sediments Operable Unit – In 2006, the Port signed an Order with EPA for a final Supplemental Remedial Investigation and Feasibility Study (SRI/FS), and a Memorandum of Agreement with the City of Seattle and King County to share costs and cooperate in the SRI/FS process.

- The Port is acting as the contracting agent for this work.
- A settlement agreement with Seattle Iron Metals was negotiated for their contribution to the SRI/FS costs. We are currently conducting the SRI/FS tasks identified in the EPA Order and subsequent work plans.
- The draft final RI was submitted in early 2013 and the final remedial investigation was submitted in September 2013.
- A draft Feasibility Study was submitted in sections in early 2014 and finalization is expected in 2015.
- The Port is also conducting source control work, as required by EPA under the ASAOC. In 2014, this will include some additional stormwater line cleanouts.

Terminal 30 Oil Cleanup – Terminal 30 is a former Chevron bulk storage site. Since the 1990's, the Port has removed significant amounts of free product and conducted an extensive groundwater-monitoring program. A draft Cleanup Action Plan (CAP) was submitted to Ecology and we are negotiating a Consent Decree to perform the work. Both the draft CAP and Consent

COMMISSION AGENDA

Ted Fick, Chief Executive Officer

December 1, 2014

Page 6 of 15

Decree will need to go out for public comment. Once the CAP is finalized and the Consent Decree signed in early 2015, the design for the cleanup system will begin.

Terminal 10 Lockheed – Lockheed previously performed the upland and sediment cleanup required at the site. The Port's continuing obligation is to maintain the upland cap and the habitat restoration area, manage any contaminated soil and groundwater encountered or removed during redevelopment or maintenance activities, and to protect Lockheed's groundwater monitoring wells. Under the Terminal 10 Uplands capital project, storm water drainage and upland cap improvements were completed in early 2012. Long term stormwater solids sampling was initiated after the capital project as a condition of EPA approval.

Terminals 103/104/105/107 – These sites have been identified by Ecology as having source control data gaps in relation to the Lower Duwamish Waterway Superfund site.

Terminal 106 Warehouse Building – The former warehouse building contains five underground storage tanks (USTs) and some cement kiln dusts (CKD) fill material. During future site development or improvements, UST decommissioning and limited soil remediation will be required

Natural Resource Damages (NRD) Habitat Restoration – Superfund liability for LDW and Harbor Island sediments also includes injury to natural resources from contamination.

- The Port is negotiating with the Elliott Bay Trustee Council (Trustees) for a settlement of these liabilities that will likely include habitat restoration as a component.
- June 7, 2011, the Commission approved the design and permitting of an expanded restoration project at Terminal 117. The design work for the restoration is nearing completion and we have applied for permits.
- A credit letter was received from the Trustees that document the NRD value of the T117 habitat project as currently designed.

After receipt of permits and permit conditions are identified, staff will be coming back to Commission to request authorization to bid, award and construct the habitat project.

Real Estate Sites

Terminal 91 Cleanup – Investigation and cleanup of this site is being administered by Ecology under a State Dangerous Waste Permit and a MTCA Order.

- The draft Feasibility Study (FS) went out for public comment December 2009 and was finalized with no changes.
- A draft Cleanup Action Plan (CAP), which identifies the cleanup approach selected by Ecology, and State Environmental Policy Act (SEPA) checklist went out for public comment October 2010 and was finalized.
- A new MTCA Order for performance of the cleanup was issued in the spring of 2012. The design has been approved by Ecology.
- On August 6, 2013, the Commission approved the CEO to advertise and execute a major construction project and to self-perform using Port crews, to implement the cleanup action required by the Order.

COMMISSION AGENDA

Ted Fick, Chief Executive Officer

December 1, 2014

Page 7 of 15

The self-performed cleanup work on Pier 91 has now been completed. The main cleanup in the former tank farm area is being performed and should be complete toward the end of December. After completion of the cleanup, the long term groundwater monitoring and O&M will begin. Investigation and cleanup of discrete units continues. Limited sediment investigation and possible removal action may be performed in 2015 in support of maintenance dredging.

Fishermen's Terminal – The Port has removed contaminated soils in the uplands, capped the uplands as a voluntary cleanup measure, and is conducting a continuing program of investigative groundwater monitoring at and near the Fishing Vessel Owners tenant site. Some dredging of contaminated sediments occurred as part of the Docks 5-10 renewal and replacement and berth dredging project. An assessment of site-wide contamination is planned.

Terminal 5 CEM Ecology State Cleanup Sites Site – In addition to the four sites listed under Seaport sites, as part of the T-5 redevelopment, the Port purchased the old West Seattle Landfill and installed an environmental cap and a methane collection system. These systems require long-term operation and maintenance, inspection, and reporting, which is continuing.

Aviation Sites/Projects

Aircraft Fuel Farms and Fueling Systems – Five underground aircraft fueling systems were constructed and operated by individual airlines beginning in the early 1960s. As of January 2007, each of these systems has been decommissioned. Appropriate environmental cleanup has been achieved for three of the systems and is in progress for two others. Long-term monitoring continues as noted below:

- Remediation of an area impacted by operations of the former United Airlines and Continental Airlines fuel farms is anticipated to continue into 2015 with confirmation monitoring to follow. The Port is a member of the PLP group for this multiple-source site.
- The Northwest Airlines and Pan Am Airlines systems have been appropriately remediated, but continue to require monitoring. The Port (as a result of Pan Am Airlines bankruptcy) and Delta Airlines (successor by merger to Northwest Airlines) will continue to monitor the former Pan Am and Northwest systems in the context of the STIA Ground Water Study, described below.

STIA Ground Water Study – In May 1999, the Port and Ecology executed an MTCA Order that required that the Port conduct a study of ground water conditions in the uppermost regional aquifer in the vicinity of the Airport. The study has been completed.

- The results demonstrate that there is little potential for Airport operations to impact ground water conditions beyond the Airport boundary, or threaten local ground water receptors (public drinking water supplies, creeks, etc.).
- Ecology accepted the study findings and designated the Port's obligations under the Agreed Order as complete.
- Ecology and the Port have agreed to a plan for long-term ground water monitoring to confirm the results of the models used in the study.

COMMISSION AGENDA

Ted Fick, Chief Executive Officer

December 1, 2014

Page 8 of 15

Under the terms of a responsible party agreement, Delta Airlines will implement the monitoring program on behalf of the Port and several rental car tenants. We anticipate completion of long-term monitoring in 2015.

Lora Lake Apartments – On July 10, 2009, the Port and Ecology executed a MTCA Order that required the Port to conduct a Remedial Investigation and Feasibility Study (RI/FS) for the cleanup of the Lora Lake Apartment Property.

- Submitted to Ecology in January 2012, the RI/FS report presented the findings of investigations and analysis of cleanup alternatives.
- January 2013, these documents were subsequently revised to address Ecology’s comments and accepted for public comment.
- A follow-on Consent Decree to complete the cleanup was negotiated in 2013.
- The initial public comment period on the RI/FS and Consent Decree ended on November 25, 2013 and was extended to January 15, 2014.

Ecology is reviewing comments received from the public and we expect them to make a final determination on the remedy by the end of 2014 or early 2015. An additional public comment period on changes made to the documents is currently scheduled to occur in early 2015. Upon finalization of the Consent Decree remedial design, including extensive field sampling and analysis will take place in 2015, 2016, and 2017. Remediation would then take place in 2018.

Schedule

Included in project scope of work write-up above.

FINANCIAL IMPLICATIONS

The following table summarizes 2015 through 2019 forecasted spending for environmental remediation projects. Forecasted spending reflects projects described in the Scope of Work.

Five-Year Spending Plan

\$s in Thousands	2015	2016	2017	2018	2019	2015-2019
Gross Project Spending	\$16,804	\$29,868	\$8,732	\$3,247	\$14,491	\$73,142
Cash from 3rd Parties*	\$(4,229)	\$(2,507)	\$(809)	\$(733)	\$(694)	\$ (9,053)
Net Port Share	\$12,575	\$27,362	\$7,841	\$2,514	\$13,797	\$64,089

***Note:** “Cash from 3rd parties” is defined below. Forecasts for payments from third parties are only included when the liabilities have been booked. Forecasted amounts do not include estimates of possible recoveries from grants, insurance or legal settlements.

<i>Budget/Authorization Summary</i>	Actuals	Budget	Remaining
2013	\$17,923,000	\$21,179,000	\$3,256,000
2014 thru 9/30/2014	\$12,343,000	\$22,180,000	\$9,837,000

Note: Budget does not carry over.

COMMISSION AGENDA

Ted Fick, Chief Executive Officer

December 1, 2014

Page 9 of 15

Budget Status and Source of Funds

Environmental cleanup projects have multiple funding sources: (1) Seaport non-operating projects and Real Estate operating and non-operating projects are funded by the Port's Tax Levy; (2) Seaport operating projects are funded by the General Fund; (3) Airport projects are funded by the Airport Development Fund. In addition, there are supplementary outside sources of funding, including the following:

- Cash from third parties - Payment from cost sharing or contribution agreements with other potentially liable parties (PLPs), where the Port functions as a funding conduit for the other PLPs and the Port holds contracts on behalf of these other PLPs.
- Litigation settlements with other PLPs.
- Insurance recoveries from both the Port's insurers and other PLPs' insurers.
- Interlocal Agreement with Department of Ecology for source control activities in the amount of \$2,000,000.
- Grants.
 - The existing projects have received MTCA grants: T91 Cleanup for \$3,000,000.
 - New grants for Terminal 117 Sediments, Bank and Uplands for \$13,100,000 and Lora Lake for \$5,000,000.

STRATEGIES AND OBJECTIVES

Environmental remediation projects define and minimize to acceptable levels threats to the environment caused by prior Port operations, prior tenant operations, and by the historical effects of industrial activity on properties acquired by the Port. Generally, the result of these efforts, as well as the attendant compliance with regulatory mandates, management of Port liabilities, and support of the local community, aligns with the goals and objectives of the Century Agenda and Seaport, Aviation, and Real Estate Division Business Plans.

TRIPLE BOTTOM LINE

Economic Development

Cleanup of contaminated sites helps bring sites back to a more productive use and supports possible re-development. Cleanup reduces and may eliminate restrictions on future land uses, protects tenants and Port workers who occupy the site, and allows for broader re-development options and maximize site use.

Environmental Responsibility

State and federal laws require elimination of unacceptable levels of environmental risk caused by the presence of contaminants in soil, groundwater and sediment. Project planning and design efforts will consider and incorporate opportunities for materials reuse, recycling, and/or reduction. Implementation of cleanup remedies will include significant environmental controls and performance monitoring to ensure public health and safety.

COMMISSION AGENDA

Ted Fick, Chief Executive Officer

December 1, 2014

Page 10 of 15

Community Benefits

Elimination of unacceptable levels of environmental risk caused by the presence of contaminants in upland soil, in marine sediments, and groundwater is the hallmark of responsible environmental stewardship, from the perspectives of both the surrounding residential and business communities and the customers that we serve.

The environmental remediation authorization will fund a mix of Port staff and outside consultant services and contractors that maximizes the effectiveness of staff resources.

ALTERNATIVES AND IMPLICATIONS CONSIDERED

The following alternatives were considered for accomplishing the work described above:

Alternative 1)

Do not complete the work. If the Port chose not to complete the work, federal and/or state regulatory agencies could mandate the work be accomplished, either by the Port under an enforcement or similar order, or by the agency. In many cases, such arrangements already exist between the Port and regulatory agencies. In either case, the Port would lose the opportunity to employ the flexibility contained in the controlling regulations, to define and direct the work, and to manage costs. This is not the recommended alternative.

Alternative 2)

Complete the work using Port staff. Port staff is already heavily involved in project direction, legal analysis, and project management, and will continue to perform these services. The nature and extent of the technical and legal work required to complete this work is substantial, and would require a large number of additional staff with additional expertise. In addition contracts would still be required for such work as laboratory analysis. This is not the recommended alternative.

Alternative 3)

Complete the work using outside consultants and contractors. Outside consultants and contractors have sufficient numbers and types of specialists necessary for timely and cost effective completion of this work; however, the work would be more costly than if some Port staff were also involved. This is not the recommended alternative.

Alternative 4)

Complete the work using a combination of Port staff (Alternative 2) and outside consultants and contractors (Alternative 3) that maximizes the ability for the Port to direct cleanup efforts and maximize the effectiveness of staff. **This is the recommended alternative.**

ATTACHMENTS TO THIS REQUEST

- Map of ERL Sites North Properties (Seaport and Real Estate)
- Map of ERL sites South Properties (Seaport and Real Estate)
- Map of ERL Sites Aviation

COMMISSION AGENDA

Ted Fick, Chief Executive Officer

December 1, 2014

Page 11 of 15

PREVIOUS COMMISSION ACTIONS OR BRIEFINGS

- December 3, 2013 – the Commission approved the project-wide authorization of (1) a five-year spending plan of \$106,740,000 for the Environmental Remediation Liability (ERL) Program for the Seaport, Real Estate, and Aviation Divisions for 2014-2018; and (2) environmental remediation liabilities funds for 2014 in the amount of \$42,180,000, of which (a) \$22,180,000 is forecasted to be spent in 2014 and (b) an amount estimated not to exceed \$20,000,000 of the remaining funds approved in the five-year plan will be obligated during 2014 to be spent in future years. Expenditures for 2014 through September 30, 2014 were \$12,343,000.
- December 4, 2012 - the Commission approved the project-wide authorization of environmental remediation liabilities funds for 2013 in the amount of \$44,179,000, of which (a) \$21,179,000 may be spent in 2013 and (b) an amount estimated not to exceed \$23,000,000 of the remaining funds approved in the five-year plan will be obligated during 2013 to be spent in future years. Commission approved a five-year spending plan of \$116,182,000 for the Environmental Remediation Liability Program for the Seaport, Real Estate, and Aviation Divisions for 2013-2017. Expenditures for 2013 were \$17,923,000.
- December 6, 2011 - the Commission approved the project-wide authorization expenditure of \$23,600,000 for environmental cleanup action on Port properties during 2012. Obligating contracts (POs) valued at \$32,900,000 in 2012 for work that will be performed in later years. Commission approved the five-year spending plan of \$91,100,000 for the Environmental Remediation Liability Program for Seaport, Real Estate and Airport for 2012 through 2016. Expenditures for 2012 were \$11,081,000.
- December 7, 2010 - the Commission approved the project-wide authorization expenditure of \$14,974,000 for environmental cleanup action on Port properties during 2011. Obligation of work in later years for \$16,200,000. Expenditures for 2011 - through December 2011 were \$11,389,000 and obligation of work in later years for 4,200,000.
- November 30, 2009 - the Commission approved the project-wide authorization expenditure of \$13,141,000 for environmental cleanup action on Port properties during 2010. Expenditures for 2010 - through December 31, 2010, were ultimately limited to \$10,529,000.
- December 9, 2008 - the Commission approved the project-wide authorization expenditure of \$10,396,000 for environmental cleanup action on Port properties during 2009. Expenditures for 2009 were ultimately limited to 7,455,000.
- December 1, 2007 - the Commission approved the project-wide authorization expenditure of \$11,833,000 for environmental cleanup action on Port properties during 2008. Expenditures for 2008 were ultimately limited to \$11,322,258.
- December 12, 2006 - the Commission approved the project-wide authorization expenditure of \$7,756,549 for environmental cleanup action on Port properties during 2007. Expenditures for 2007 were ultimately limited to \$7,537,286.
- June 27, 2006 - the Commission approved an increase in the 2006 project-wide authorization for environmental cleanup action on Port properties, to increase the

COMMISSION AGENDA

Ted Fick, Chief Executive Officer

December 1, 2014

Page 12 of 15

authorization in the amount of \$6,000,000 to \$14,705,760. Expenditures for 2006 were ultimately limited to \$11,087,873.38.

- December 13, 2005 - the Commission approved the project-wide authorization expenditure of \$8,705,760 for environmental cleanup action on Port properties during 2006.
- March 23, 2005 - the Commission approved the project-wide authorization expenditure of \$8,102,222, for environmental cleanup action on Port properties during 2005. Actual expenditures for 2005 were ultimately limited to \$6,255,791.
- March 23, 2004 - the Commission approved the project-wide authorization expenditure of \$8,081,000, for environmental cleanup action on Port properties during 2004. Actual expenditures for 2004 were ultimately limited to \$2,136,943.
- March 11, 2003 - the Commission approved the project-wide authorization expenditure of \$4,999,000 for environmental cleanup action on Port properties and for potential environmental liabilities during 2003. Actual expenditures for 2003 were ultimately limited to \$2,459,870.
- June 11, 2002 - the Commission approved the expenditure of \$1,500,000 and contract amendments for the Environmental Protection Agency's (EPA) Order on Consent to continue work on the Lower Duwamish Sediments Superfund site and the East Waterway Sediment Operable Unit of the Harbor Island Superfund Site.
- July 10, 2001 - the Commission approved the expenditure of \$5,100,000 for nine Aviation projects and six Seaport projects during 2001.
- March 14, 2000 - the Commission approved the expenditure of \$1,000,000 for aquatic sediment management for participating in the development and implementation of federal and state laws and regulations relating to the disposition of contaminated aquatic sediments, and the expenditure of \$2,000,000 for cleanup-related investigations at the former Chevron Oil Terminal site at Terminal 30.
- August 24, 1999 - the Commission approved the expenditure of \$800,000 for environmental cleanup of Port property adjacent to the Malarkey Asphalt Co. site.
- June 8, 1999 - the Commission approved the expenditure of \$300,000 to conduct the Industrial Waste System Hydrogeological Study required by the Ecology as a performance condition of the 1998 National Pollution Discharge and Elimination System Permit.
- February 25, 1997 - the Commission approved the expenditure of \$1,100,000 to conduct the STIA Ground Water Study required by a Washington Ecology Model Toxics Control Act (MTCA) Agreed Order.
- February 27, 1996 - the Commission approved the expenditure of \$2,325,000 for eleven projects during 1996.
- March 28, 1995 - the Commission approved the expenditure of \$1,875,000 for nine projects during 1995.
- March 8, 1994 - the Commission approved the expenditure of \$776,000 for eleven projects during 1994.
- July 13, 1993 - the Commission approved the expenditure of \$1,050,000 for eight projects during 1993.

COMMISSION AGENDA

Ted Fick, Chief Executive Officer

December 1, 2014

Page 13 of 15

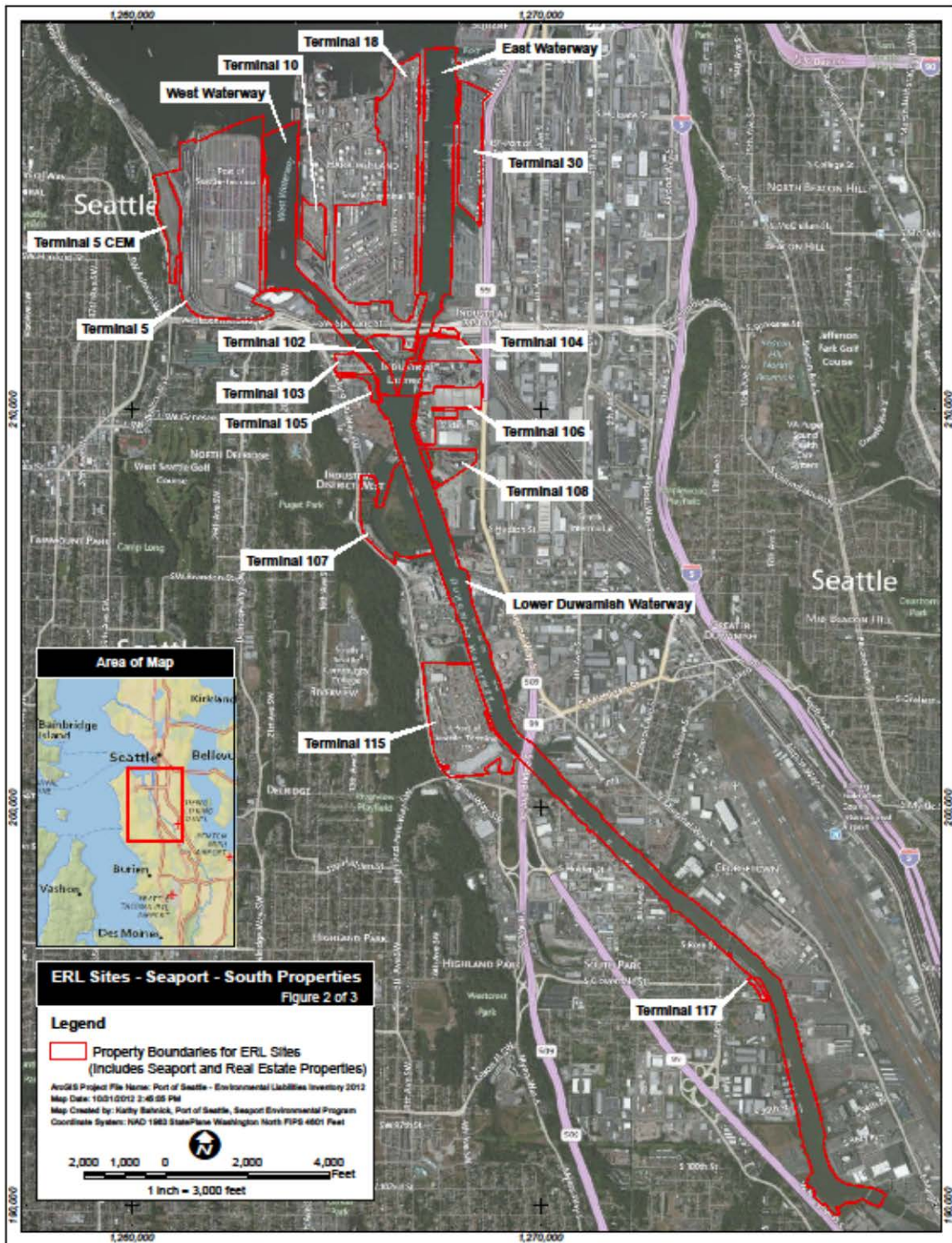


COMMISSION AGENDA

Ted Fick, Chief Executive Officer

December 1, 2014

Page 14 of 15



COMMISSION AGENDA

Ted Fick, Chief Executive Officer

December 1, 2014

Page 15 of 15

